



\* All images in this datasheet are for illustrative purposes only.

**INDOOR** LG LED SIGNAGE

# LSBA Compact Series



Vivid Colors with a Great Contrast



Fast Installation and Teardown



Front or Rear Serviceability



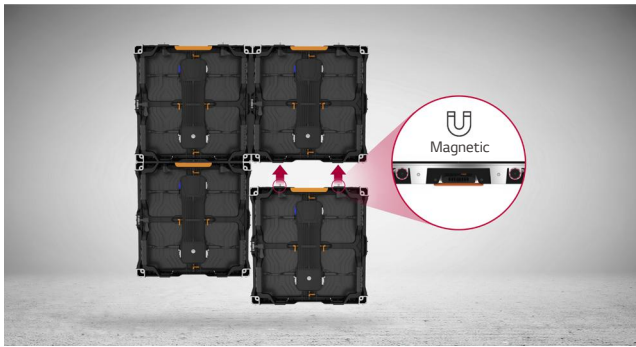
Easy Maintenance



Simple Status Check

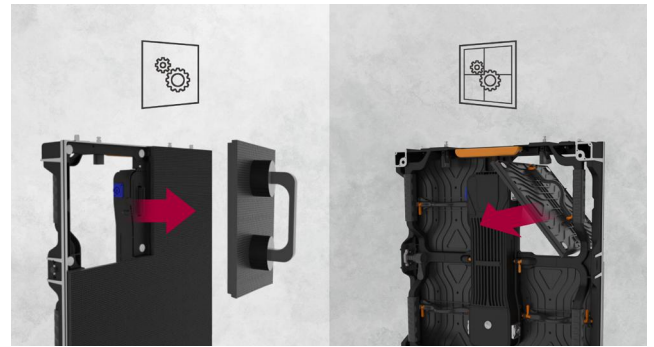


Compatibility with LG Solutions



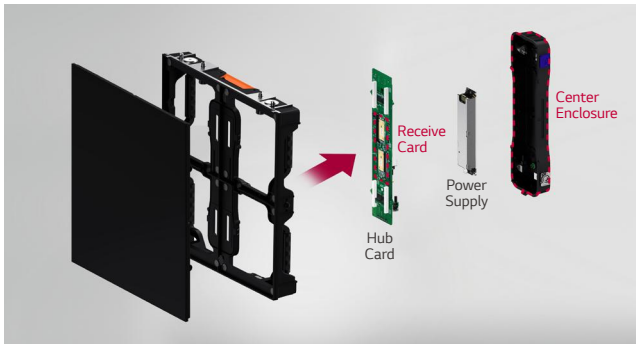
### Fast Installation and Teardown

The LED cabinets are attached via magnets for easy installation. Moreover, lock handles on the top and sides make it easy for even one person to set up and dismantle the cabinets.



### Front or Rear Serviceability

The product offers either front access or rear access, allowing customers to choose installation options according to their environment.



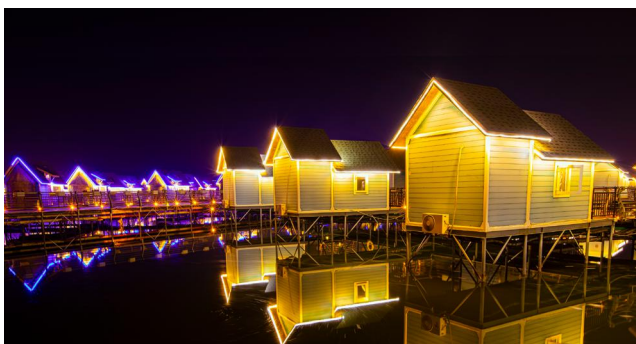
### Easy Maintenance

The center enclosure on the back of the product conveniently includes a power supply module, receive card, and hub card, making it easy to maintain the components.



### Simple Status Check

You can easily check power and signal status through the status button on the outside of the cabinet (alternates between red and green). The button shows test patterns, eliminating the need to connect the signal for failure detection.



### Vivid Colors with a Great Contrast

LSBA Compact Series delivers a vivid color with a contrast of 8,000 : 1, attracting the viewer by making images more unique and eye-popping.



### Compatibility with LG Software Solutions

Powered by LG's webOS-based system controller\*, the Compact series is compatible with LG software solutions including LG ConnectedCare, LED Assistant, and SuperSign CMS which help customers operate their own business.

\* Sold separately

# PRODUCT INFORMATION



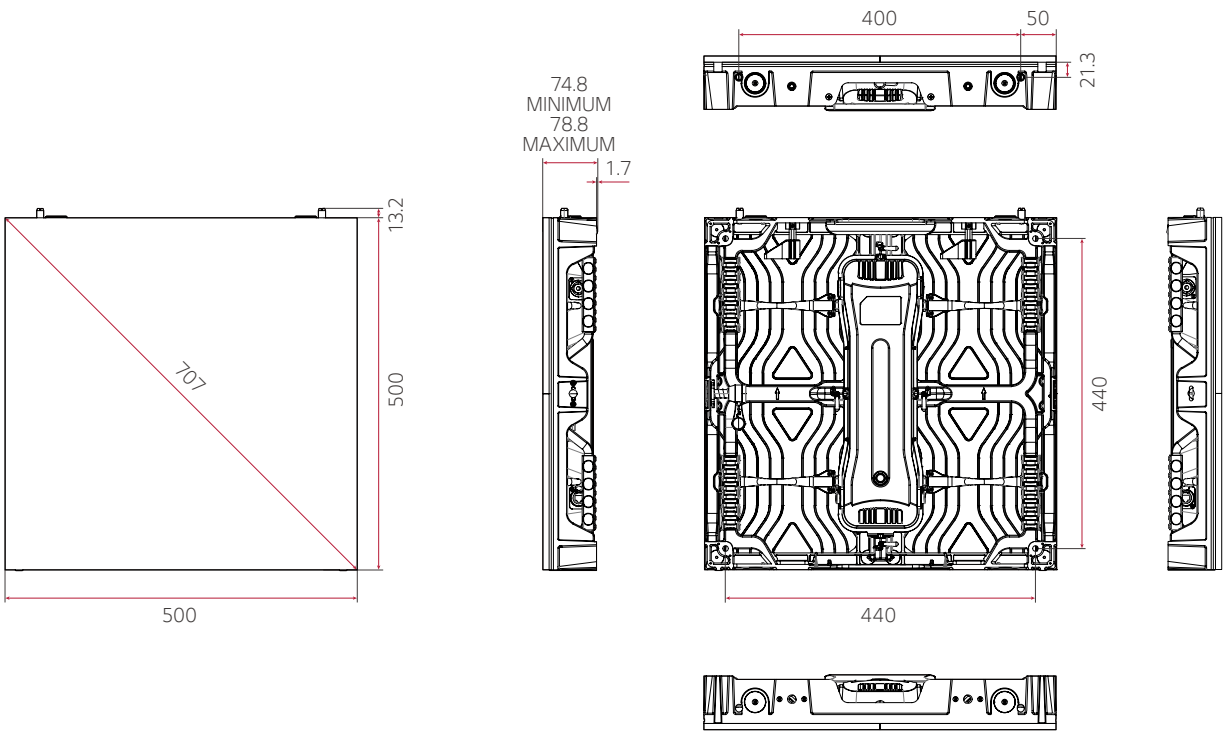
\* Image based on a single power model.

## LSBA Compact Series

Pixel Pitch	2.50 / 3.90 mm
Brightness	1,000 nit
Refresh Rate	3,840 Hz
Serviceability	Front or Rear (One Option Only)
IP Rating	IP5X

## DIMENSION

(unit: mm)



Download  
LG C-Display+  
Mobile App  
Google Play Store

- [www.lg.com/global/business/information-display](http://www.lg.com/global/business/information-display)
- [www.youtube.com/c/LGCommercialDisplay](https://www.youtube.com/c/LGCommercialDisplay)
- [www.facebook.com/LGInformationDisplay](https://www.facebook.com/LGInformationDisplay)
- [www.linkedin.com/company/lginformationdisplay](https://www.linkedin.com/company/lginformationdisplay)
- [twitter.com/LG\\_ID\\_HQ](https://twitter.com/LG_ID_HQ)

LG may make changes to specifications and product descriptions without notice. Copyright © 2020 LG Electronics Inc. All rights reserved. "LG Life's Good" is a registered trademark of LG Corp. The names of products and brands mentioned here may be the trademarks of their respective owners.

